

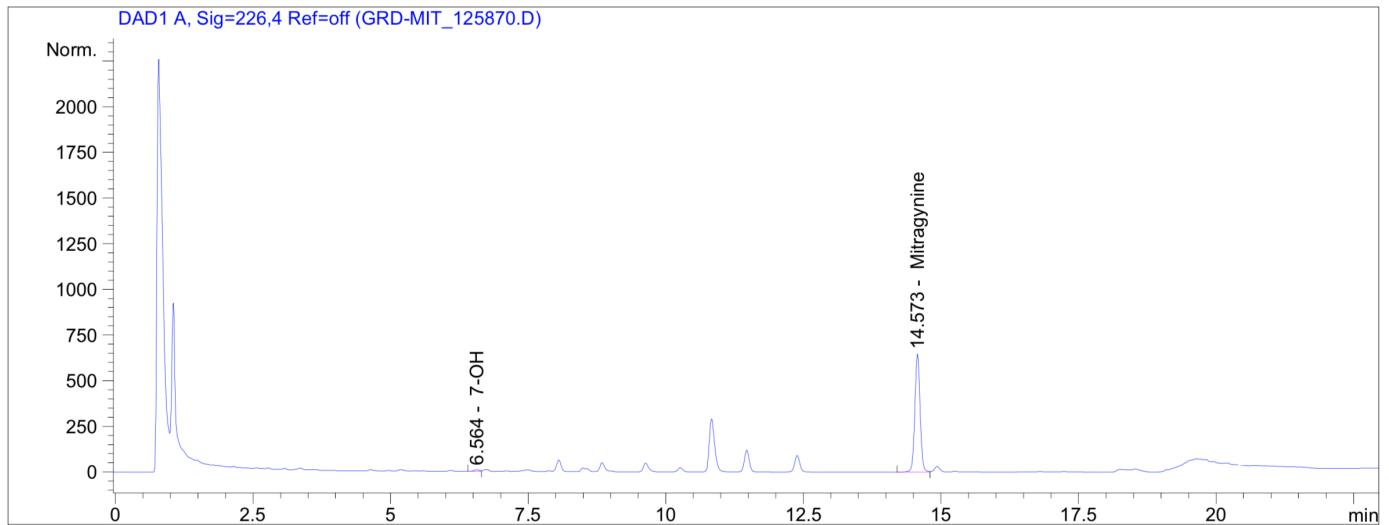
WONDERLAND LABS

Certificate of Analysis

7 JANUARY 2020

RED BALI / MITRAGYNINE / 1

Client:	K Pharma	Acquired By:	Krystal S.
Sample Type:	Powdered	Date Acquired:	12/23/2019
Sample Weight:	2000mg	Acquisition Method:	MITA_EVO-R01-23M
Dilution:	1.0	Testing ID:	GRD-MIT_125870.D
Vial:	Vial 1	Date Processed:	12/23/2019
Injection Volume:	8.3 µl	Run Time:	15 min
SAMPLE SET:	125870	Calibration ID:	999-11111



#	Analyte	RT (min)	Area	Amt (µg/mL)	Alkaloid	Total %
1	Mitragynine	14.573	4287.598	20.350	C ₂₃ H ₃₀ N ₂ O ₄	0.69
2	7-Hydroxymitragynine	N.D.	N.D.	N.D.	C ₂₃ H ₃₀ N ₂ O ₅	N.D.
3						
4						
5						
6						

Mitragynine Content: 0.69%
ZERO PERIOD SIX NINE PERCENT

Adulterants (Y/N): None Detected

Identity Confirmed: YES

QR SEAL OF AUTHENTICITY

VERIFIED BY: *[Signature]*

Quality Assurance: *Michelle Herreis*